

Tickets available **CLICK HERE** **INDUSTRY LEADERS of Arizona 2017** **February 23, 2017**

Vote Now!  
**RANKING**  
*The Best of Arizona Business*  
**ARIZONA**

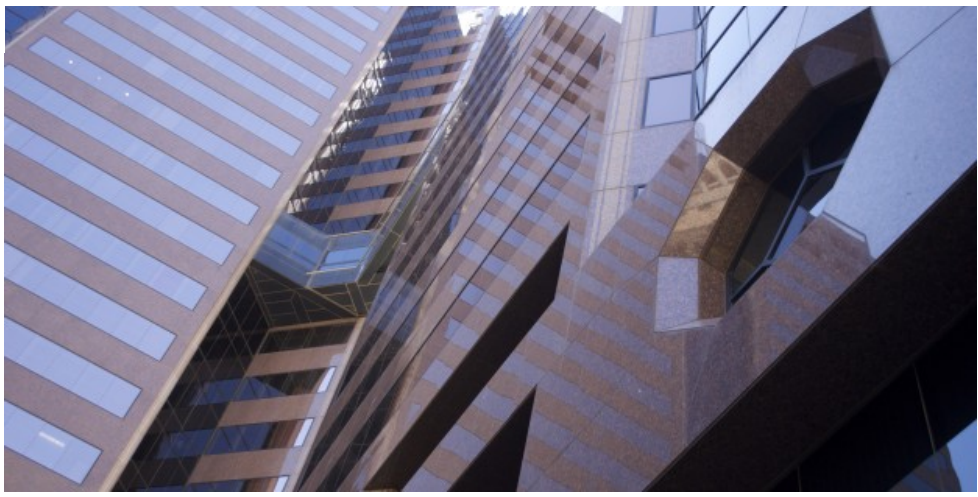
**AZBIGMEDIA**

store nominate

[ABOUT](#) | [CONTACT](#) | [RSS](#)

SEARCH  **GO**

- HOME
- BUSINESS
- COMMERCIAL REAL ESTATE
- TRAVEL
- PUBLICATIONS
- MEDIA KITS
- OUR EVENTS
- CALENDAR
- STORE
- Az Business
- AZRE
- People & Projects to Know
- Ranking Arizona
- Az Business Leaders
- Experience AZ
- Play Ball
- Home & Design



**Lee & Associates, RSP, Wespac will reposition Renaissance Square**

Posted February 15, 2017 by [AZRE](#)

Owners of Renaissance Square, Downtown Phoenix's iconic office towers at 2 and 40 N. Central Ave., have engaged Lee & Associates, RSP Architects and Wespac Construction to completely reimagine the nearly one million square foot Class A property.

The ownership group, a joint-venture between funds managed by Oaktree Capital Management, L.P. ("Oaktree") and Cypress Office Properties, LLC ("Cypress"), has selected Lee & Associates ("Lee") as exclusive leasing representatives for the property. Lee Principals, Craig Coppola, Bill Blake, Andrew Cheney, Colton Trauter and Associate, Gregg Kafka, were named the office brokers for this project.

"We are honored to work on leasing up this landmark property undergoing a major renovation. The new owner's vision and significant capital commitment will transform Renaissance Square into the best office location in Phoenix" said Coppola.

"FINDING GOOD **PARTNERS** IS THE KEY TO SUCCESS IN ANYTHING."  
Robert Kiyosaki, Businessman & Author  
**GOOD NEWS. YOU FOUND US.**  
**JOKAKE** [Click here to follow us on LinkedIn.](#)

**EVERY FRI AND SAT LIVE MUSIC**  
STARTING AT 7PM  
**DESERT RIDGE MARKETPLACE** **VIEW LINEUP**

**SINCE 1970 BUSINESS ATTORNEYS WHO UNDERSTAND YOURS**  
**BEST LAW FIRMS USNews 2016**  
602.274.7611  
BCATTORNEYS.COM  
**BURCH & CRACCHIOLO**

Oaktree and Cypress have also tapped RSP Architects and Wespac Construction to create a modern vision for the property. Along with a complete redesign of the lobbies, the property will undergo a renovation of all common area spaces, with the addition of new collaborative work spaces, an indoor/outdoor conference center and tenant lounge to replace a rooftop tennis court.

“We are excited to be working with Lee, RSP and Wespac who have each successfully transformed other high-profile assets and share our commitment to making Renaissance Square Phoenix’s premier office property,” said Mark Jacobs, Managing Director of Oaktree.



“As a trusted design partner, we are excited for the opportunity to co-create a new identity for these late-1980’s buildings in conjunction with Oaktree, Cypress and Wespac,” said Alissa Franconi, Senior Associate of RSP Architects. “With the reposition and location in the heart of Phoenix’s central business district, Renaissance Square will once again take its place as a jewel for Downtown.”



3



1



The trophy asset, located at the intersection of Central Ave. and Washington St. in the heart of Downtown Phoenix, already offers unparalleled features and nearby world-class amenities. The property features six on-site restaurants, abundant parking and 24-hour security. There are over 40 restaurants within 250 feet of the property, 11 professional sports and entertainment venues within 1,000 feet and a Metro light rail station at the property’s front door. Additionally, there are 25 multi-family developments with over 3,400 units within one mile and walking distance to most Downtown courthouses.

POSTED: February 15, 2017. TAGS: [Lee & Associates](#), [Renaissance Square](#), [RSP](#), [RSP Architects](#), [Wespac](#)



#### About AZRE

Pulling together the multiple facets of the commercial real estate industry in Arizona, AZRE: Arizona Commercial Real Estate Magazine reaches out to the largest local and national commercial real estate audience within the Grand Canyon State and beyond. AZRE covers up-to-date happenings within commercial development, brokerage, construction, investment, finance, architecture, property management, real estate law and more as it relates to Arizona. Additionally, AZRE is an active voice within the commercial industry, partnering with such organizations as NAIOP, ABA, ICSC AZ, AIA AZ and Valley Partnership.

[View all posts by AZRE →](#)

[← Experience outdoors at Tres Rios Nature Festival GCU commercial hub to have \\$670M annual impact](#)

ING YOUR PROJECT FROM  
CONCEPTUAL DESIGN...  
OUGH THE FINAL STAGES  
OF CONSTRUCTION

602.334.4387

3engineering.com

CONCERTS  
*Under the Stars*  
IN FOUNTAIN COURT

THE LARGEST AQUARIUM IN THE SOUTHWEST  
**WHERE DESERT MEETS OCEAN**

ODYSSSEA AQUARIUM  
BUY TICKETS ▶

Your Name \*

First

Last

Your Email \*

Which newsletters?

- Az Business Leaders
- Az Business Magazine