

# **+43,272 SF INDUSTRIAL BUILDING 2265 CROSSWIND DRIVE**

Prescott, Arizona

**LEE &  
ASSOCIATES**  
COMMERCIAL REAL ESTATE SERVICES

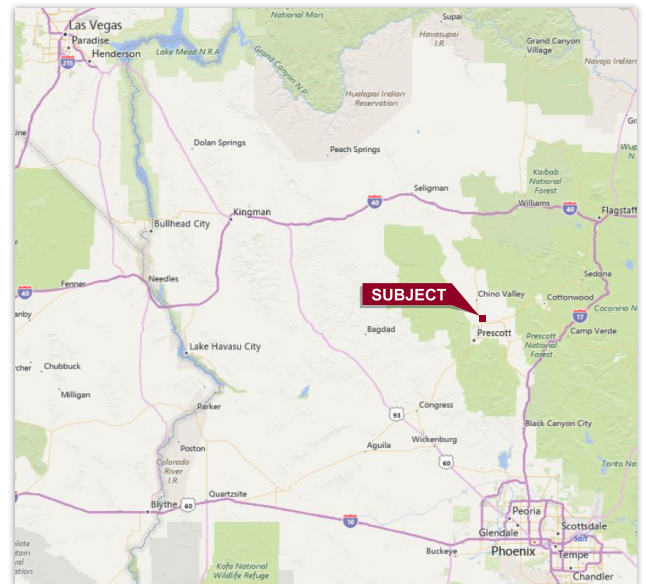
[www.learizona.com](http://www.learizona.com)

**SALE/LEASE**



## **FEATURES:**

- 43,272 SF Industrial/Manufacturing Building
- 3.27 Acre Lot
- Located in the Prescott Industrial Airpark
- 3,855 SF of Office Space
- Clear Height: 24'
- 3 Truckwells, 1 Grade Level Door
- Natural Gas
- Fully Sprinklered
- Evaporative Cooled Warehouse
- 1,200 Amp / 3 PH / 277-480 Volt Electric
- Outside Secured Yard
- Compressed Air Lines



**TOM LOUER, SIOR**  
LEE & ASSOCIATES  
PRINCIPAL  
602.954.3779  
[tlouer@learizona.com](mailto:tlouer@learizona.com)

**MATT HOBAICA, SIOR**  
LEE & ASSOCIATES  
PRINCIPAL  
602.954.3755  
[mhobaica@learizona.com](mailto:mhobaica@learizona.com)

Lee & Associates Arizona  
3200 E. Camelback Road  
Suite 100  
Phoenix, AZ  
85018

**LEE &  
ASSOCIATES**  
COMMERCIAL REAL ESTATE SERVICES



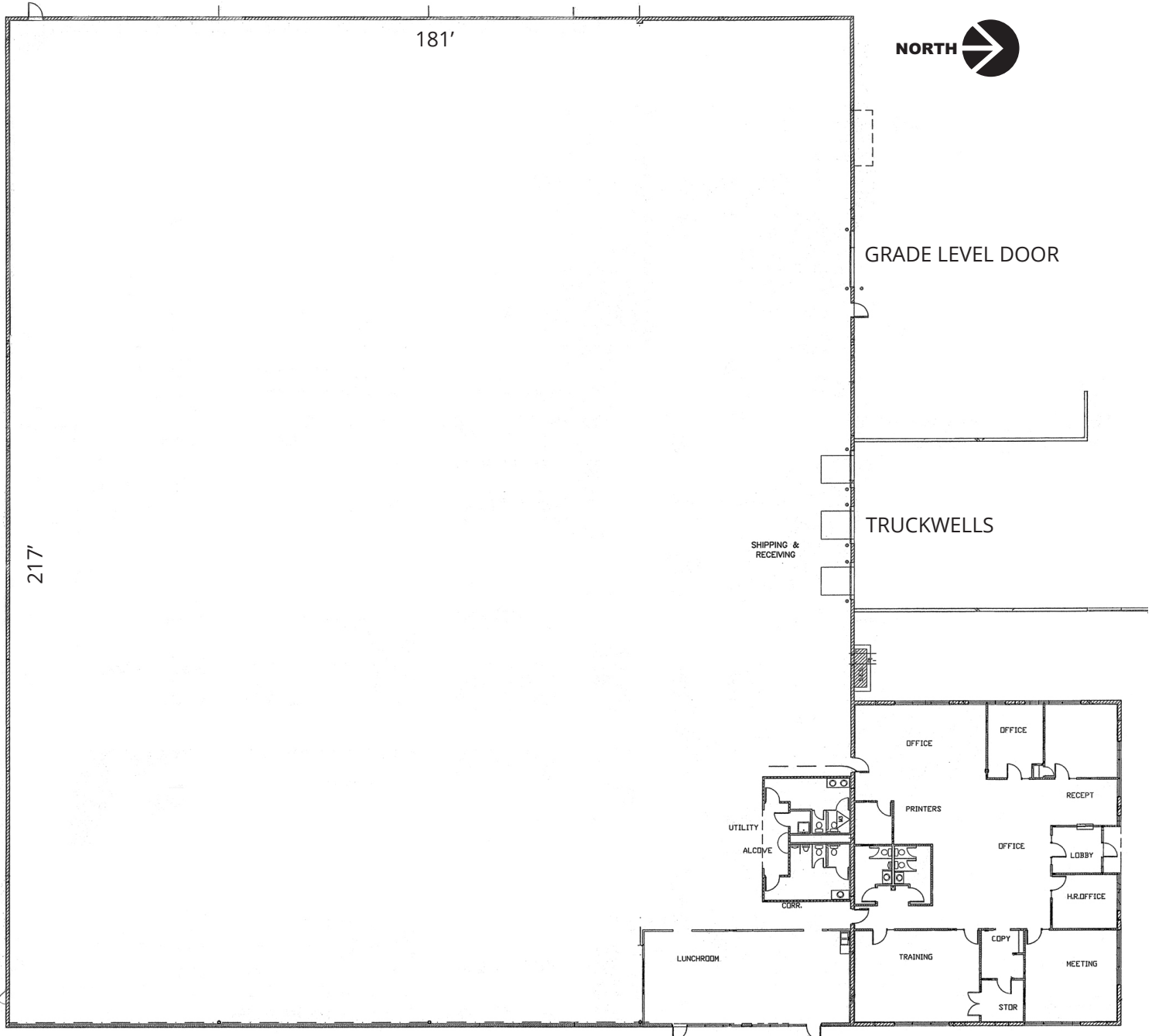
All information furnished regarding property for sale, rental or financing is from sources deemed reliable, but no warranty or representation is made to the accuracy thereof and same is submitted to errors, omissions, change of price, rental or other conditions prior to sale, lease or financing or withdrawal without notice. No liability of any kind is to be imposed on the broker herein.

# **+43,272 SF INDUSTRIAL BUILDING** **2265 CROSSWIND DRIVE**

Prescott, Arizona

**LEE & ASSOCIATES**  
COMMERCIAL REAL ESTATE SERVICES

[www.learizona.com](http://www.learizona.com)



**TOM LOUER, SIOR**  
LEE & ASSOCIATES  
PRINCIPAL  
602.954.3779  
[tlouer@learizona.com](mailto:tlouer@learizona.com)

**MATT HOBAICA, SIOR**  
LEE & ASSOCIATES  
PRINCIPAL  
602.954.3755  
[mhobaica@learizona.com](mailto:mhobaica@learizona.com)

Lee & Associates Arizona  
3200 E. Camelback Road  
Suite 100  
Phoenix, AZ  
85018

**LEE & ASSOCIATES**  
COMMERCIAL REAL ESTATE SERVICES



All information furnished regarding property for sale, rental or financing is from sources deemed reliable, but no warranty or representation is made to the accuracy thereof and same is submitted to errors, omissions, change of price, rental or other conditions prior to sale, lease or financing or withdrawal without notice. No liability of any kind is to be imposed on the broker herein.

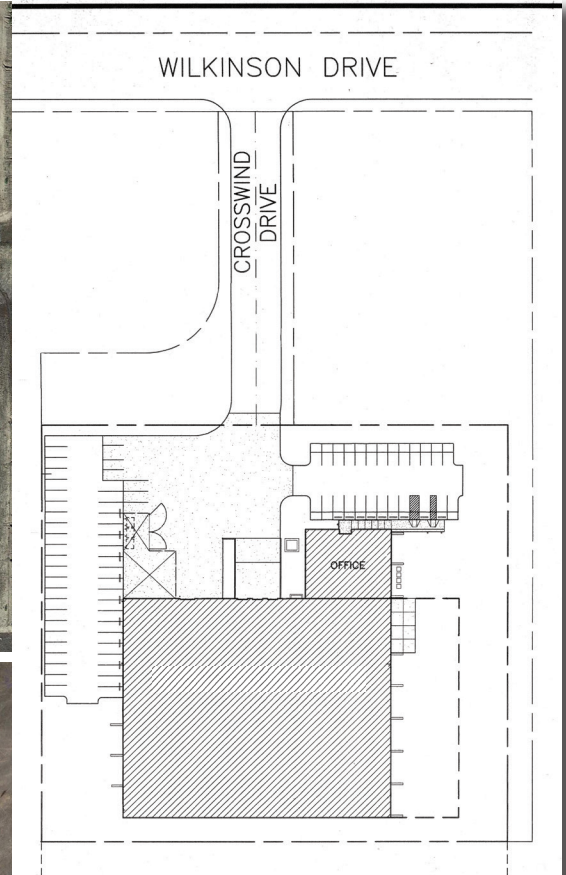


# +43,272 SF INDUSTRIAL BUILDING 2265 CROSSWIND DRIVE

Prescott, Arizona

**LEE & ASSOCIATES**  
COMMERCIAL REAL ESTATE SERVICES

[www.learizona.com](http://www.learizona.com)



**Parcel #102-03-012**  
**43,272 SF Building**  
**3.27 Acres**  
**Zoned IL**  
**Built in 1992**

**TOM LOUER, SIOR**  
LEE & ASSOCIATES  
PRINCIPAL  
602.954.3779  
[tlouer@learizona.com](mailto:tlouer@learizona.com)

**MATT HOBAICA, SIOR**  
LEE & ASSOCIATES  
PRINCIPAL  
602.954.3755  
[mhobaica@learizona.com](mailto:mhobaica@learizona.com)

Lee & Associates Arizona  
3200 E. Camelback Road  
Suite 100  
Phoenix, AZ  
85018

**LEE & ASSOCIATES**  
COMMERCIAL REAL ESTATE SERVICES



All information furnished regarding property for sale, rental or financing is from sources deemed reliable, but no warranty or representation is made to the accuracy thereof and same is submitted to errors, omissions, change of price, rental or other conditions prior to sale, lease or financing or withdrawal without notice. No liability of any kind is to be imposed on the broker herein.