

CABOT COMMERCE CENTER FOR LEASE | 101-FREEWAY & CACTUS ROAD PEORIA, ARIZONA



NEW SPEC SUITES UNDER CONSTRUCTION



**8960 & 9040 WEST LARKSPUR DRIVE +
8957 WEST WINDSOR DRIVE**

AVAILABLE:

227,160 SF 3-BUILDING PROJECT

- 8960 West Larkspur Drive (Building 1)
Suites 105 - 16,396 SF - 3 Docks/3 Grade
- Suites 114 - 15,124 SF - 2 Docks/2 Grade
- 8957 West Windsor Drive (Building 2)
Suite 117 - 4,856 SF - 1 Dock/1 Grade
- 9040 West Larkspur Drive (Building 3)
Suite 132 - 19,056 SF - 4 Docks/3 Grade

9/9/15

This property is owned by:



MATT HOBAICA, SIOR
PRINCIPAL
602.954.3755
mhobaica@leearizona.com

JEFF CONRAD
PRINCIPAL
602.954.3743
jconrad@leearizona.com

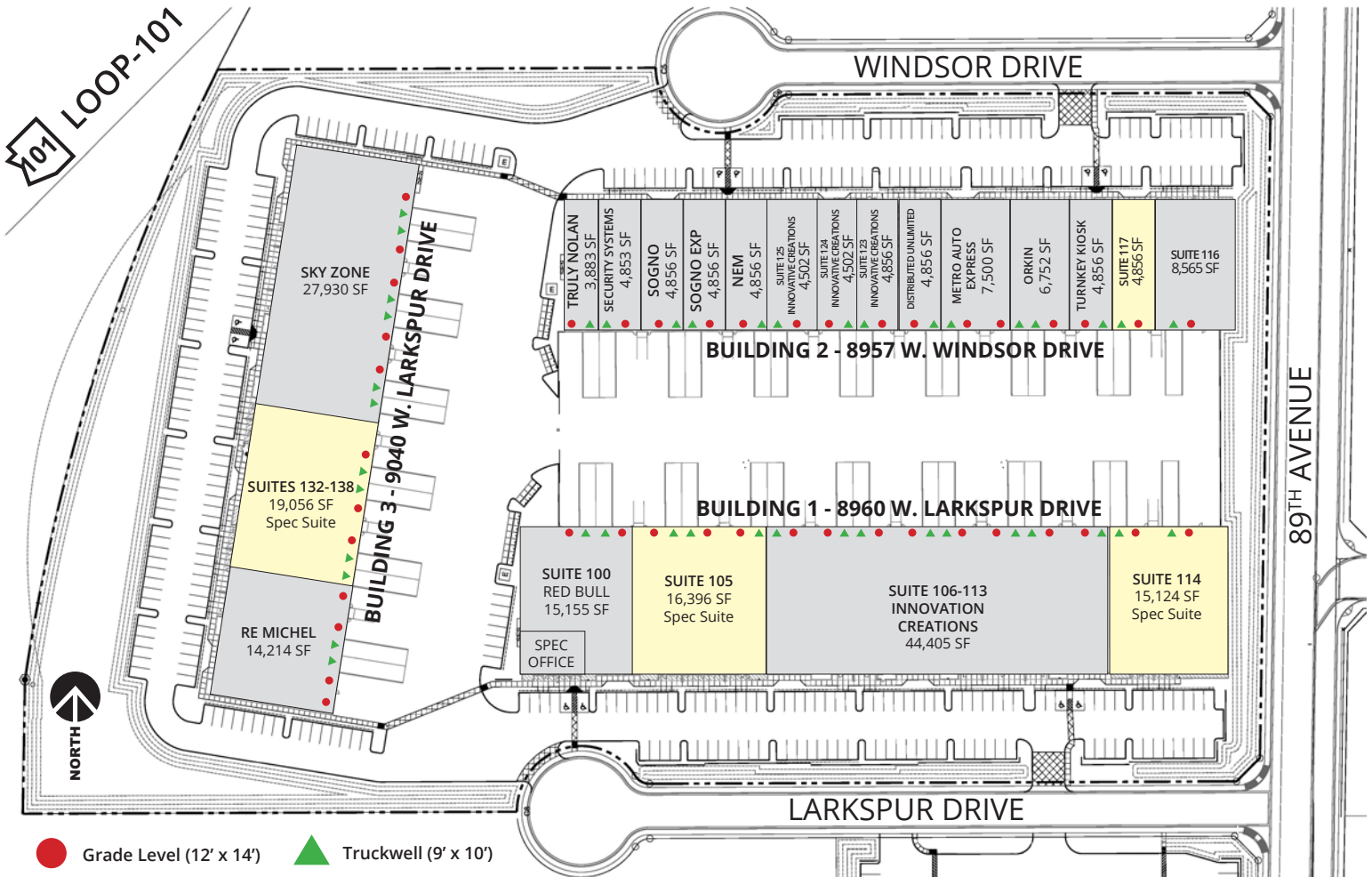
CHRIS McCLURG
PRINCIPAL
602.954.3766
cmclurg@leearizona.com

All information furnished regarding property for sale, rental or financing is from sources deemed reliable, but no warranty or representation is made to the accuracy thereof and same is submitted to errors, omissions, change of price, rental or other conditions prior to sale, lease or financing or withdrawal without notice. No liability of any kind is to be imposed on the broker herein.

CABOT COMMERCE CENTER

FOR LEASE | 101-FREEWAY & CACTUS ROAD

PEORIA, ARIZONA



8960 West Larkspur Drive

91,080 SF
BUILDING 1

- Truckwell & grade level loading
- 24' clear
- Sky lights
- Bay spacing 46' X 40'
- 180' truck court, secure
- 3600 amps 277/480 volt power

8957 West Windsor Drive

74,880 SF
BUILDING 2

- Truckwell & grade level loading
- 24' clear
- Sky lights
- Bay spacing 40' X 40'
- 180' truck court, secure
- 3600 amps 277/480 volt power

9040 West Larkspur Drive

61,200 SF
BUILDING 3

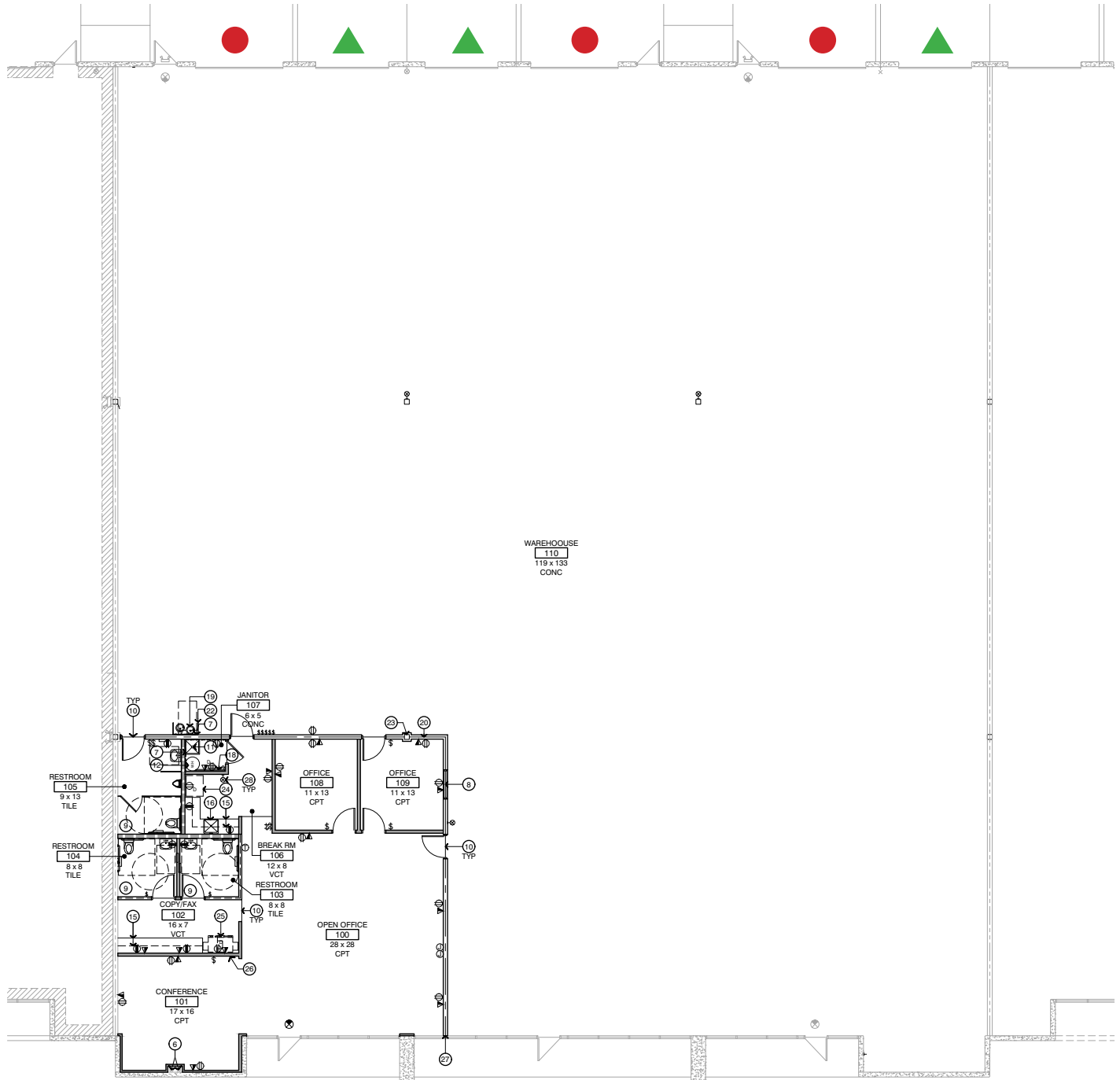
- Truckwell & grade level loading
- Loop 101 freeway frontage
- 24' clear
- Sky lights
- Bay spacing 40' X 40'
- 130' truck court, secure
- 3600 amps 277/480 volt power

CABOT COMMERCE CENTER

FOR LEASE | 101-FREEWAY & CACTUS ROAD
PEORIA, ARIZONA



Bldg 1 - 8960 W. Larkspur Dr. Suite 105
16,396 Square Feet



Grade Level Truckwell

MATT HOBAICA, SIOR
PRINCIPAL
602.954.3755
mhobaica@leearizona.com

JEFF CONRAD
PRINCIPAL
602.954.3743
jconrad@leearizona.com

CHRIS McCLURG
PRINCIPAL
602.954.3766
cmcclurg@leearizona.com

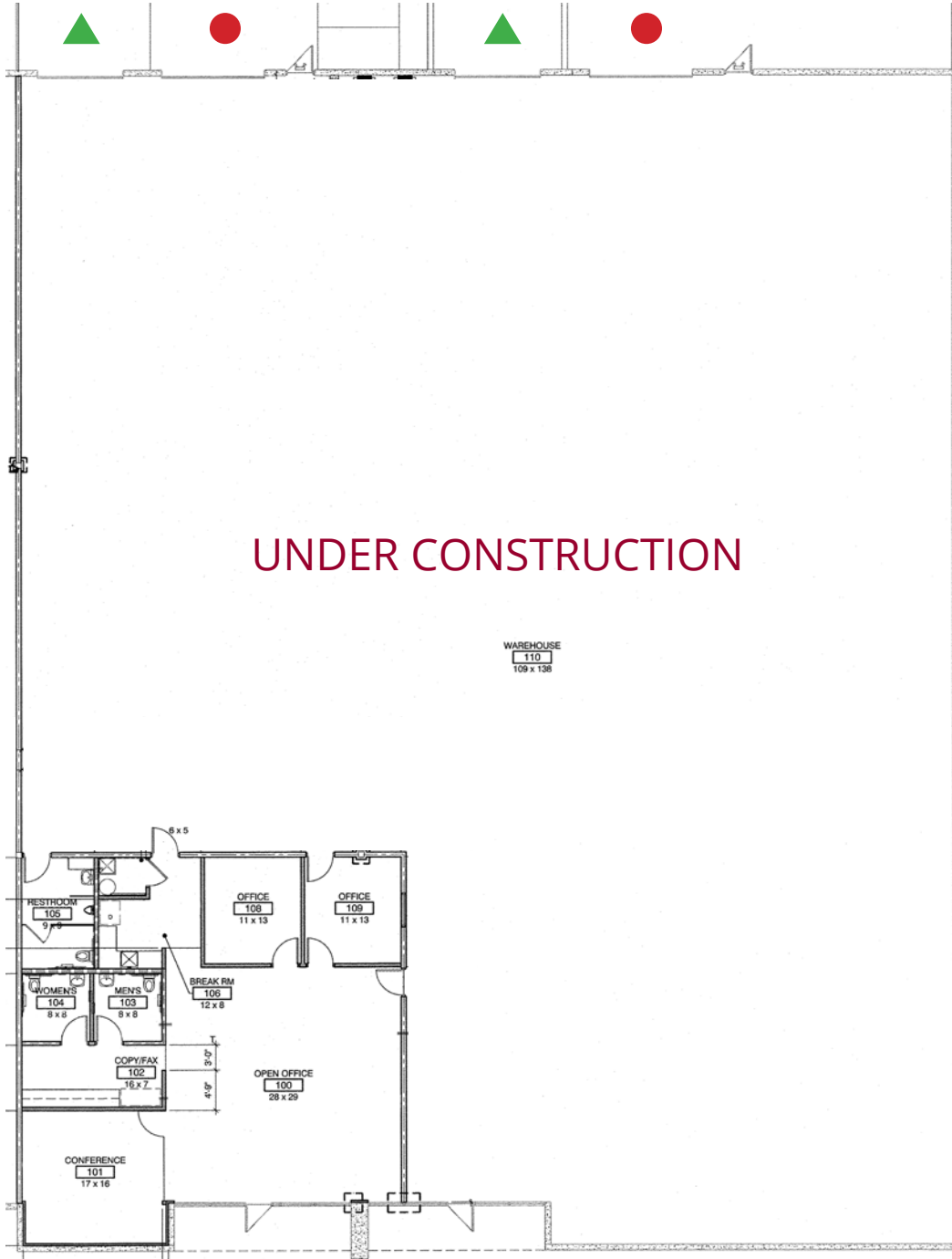
3200 E. Camelback Rd.
Suite 100
Phoenix, Arizona, 85018
ph: 602.956.7777 fx: 602.954.0510
www.leearizona.com

CABOT COMMERCE CENTER

FOR LEASE | 101-FREEWAY & CACTUS ROAD
PEORIA, ARIZONA



Bldg 1 - 8960 W. Larkspur Dr. Suite 114
15,124 Square Feet



UNDER CONSTRUCTION

WAREHOUSE
110
109 x 138

▲ Grade Level ● Truckwell

MATT HOBAICA, SIOR
PRINCIPAL
602.954.3755
mhobaica@leearizona.com

JEFF CONRAD
PRINCIPAL
602.954.3743
jconrad@leearizona.com

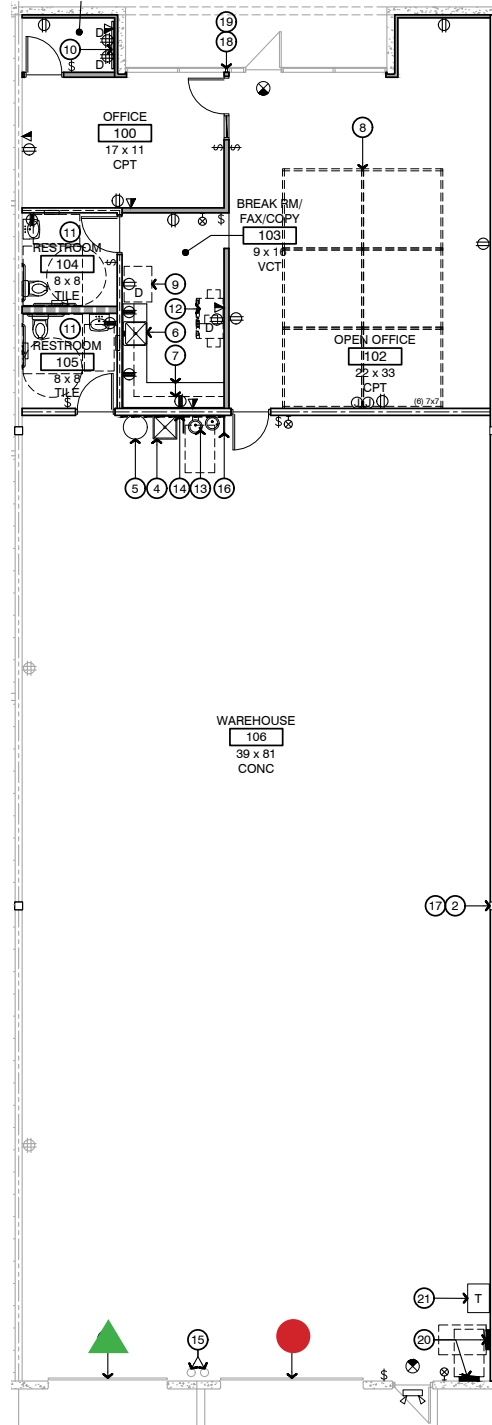
CHRIS McCLURG
PRINCIPAL
602.954.3766
cmclurg@leearizona.com

3200 E. Camelback Rd.
Suite 100
Phoenix, Arizona, 85018
ph: 602.956.7777 fx: 602.954.0510
www.leearizona.com

CABOT COMMERCE CENTER
FOR LEASE | 101-FREEWAY & CACTUS ROAD
PEORIA, ARIZONA



Bldg 2 - 8957 W. Windsor Dr. Suite 117
4,856 Square Feet



▲ Grade Level ● Truckwell

MATT HOBAICA, SIOR
 PRINCIPAL
 602.954.3755
 mhobaica@learizona.com

JEFF CONRAD
 PRINCIPAL
 602.954.3743
 jconrad@learizona.com

CHRIS McCLURG
 PRINCIPAL
 602.954.3766
 cmcclurg@learizona.com

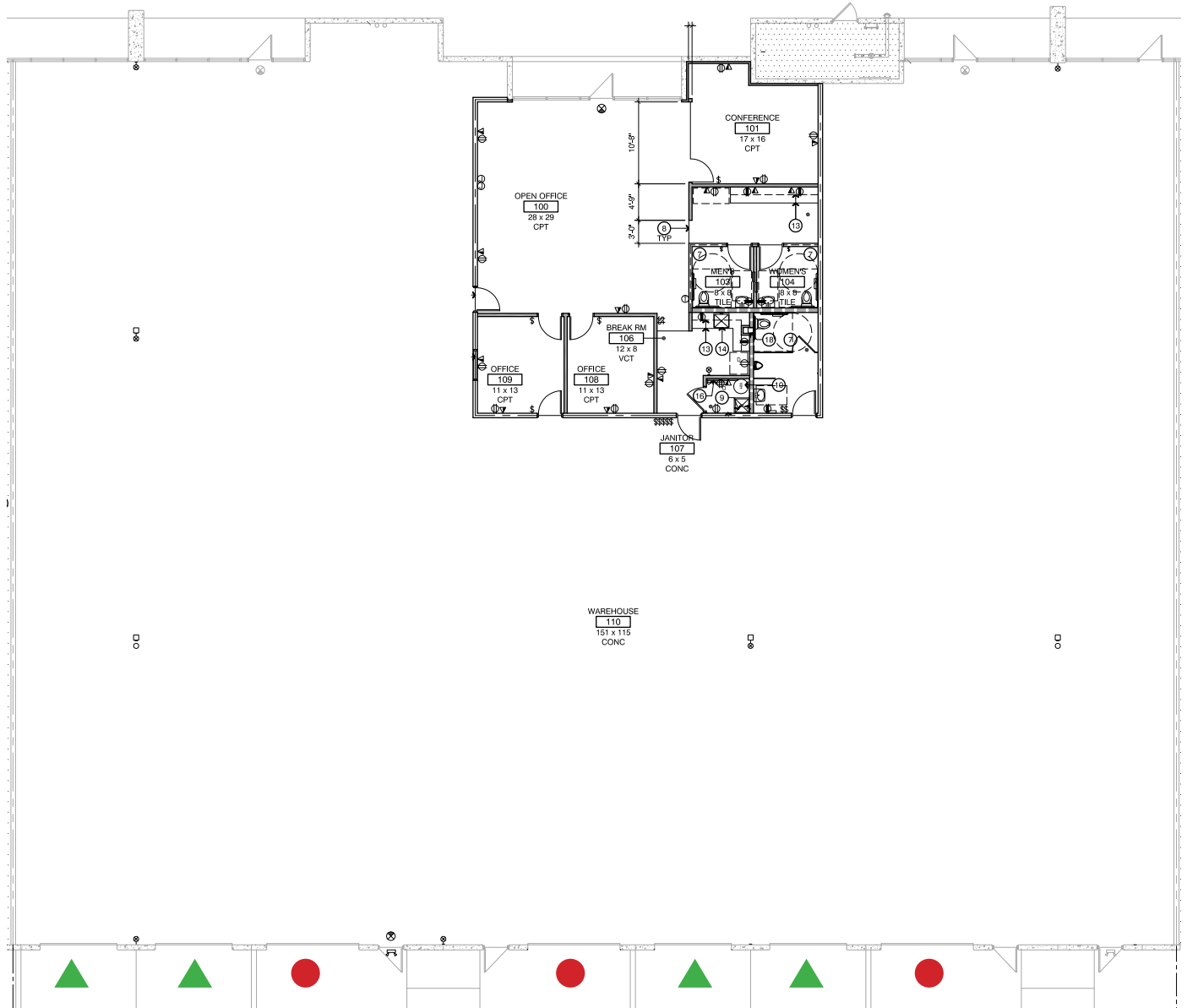
3200 E. Camelback Rd.
 Suite 100
 Phoenix, Arizona, 85018
 ph: 602.956.7777 fx: 602.954.0510
 www.learizona.com

CABOT COMMERCE CENTER

FOR LEASE | 101-FREEWAY & CACTUS ROAD
PEORIA, ARIZONA



Bldg 3 - 9040 W. Larkspur Dr. Suite 132
19,056 Square Feet



Grade Level Truckwell

MATT HOBAICA, SIOR
PRINCIPAL
602.954.3755
mhobaica@leearizona.com

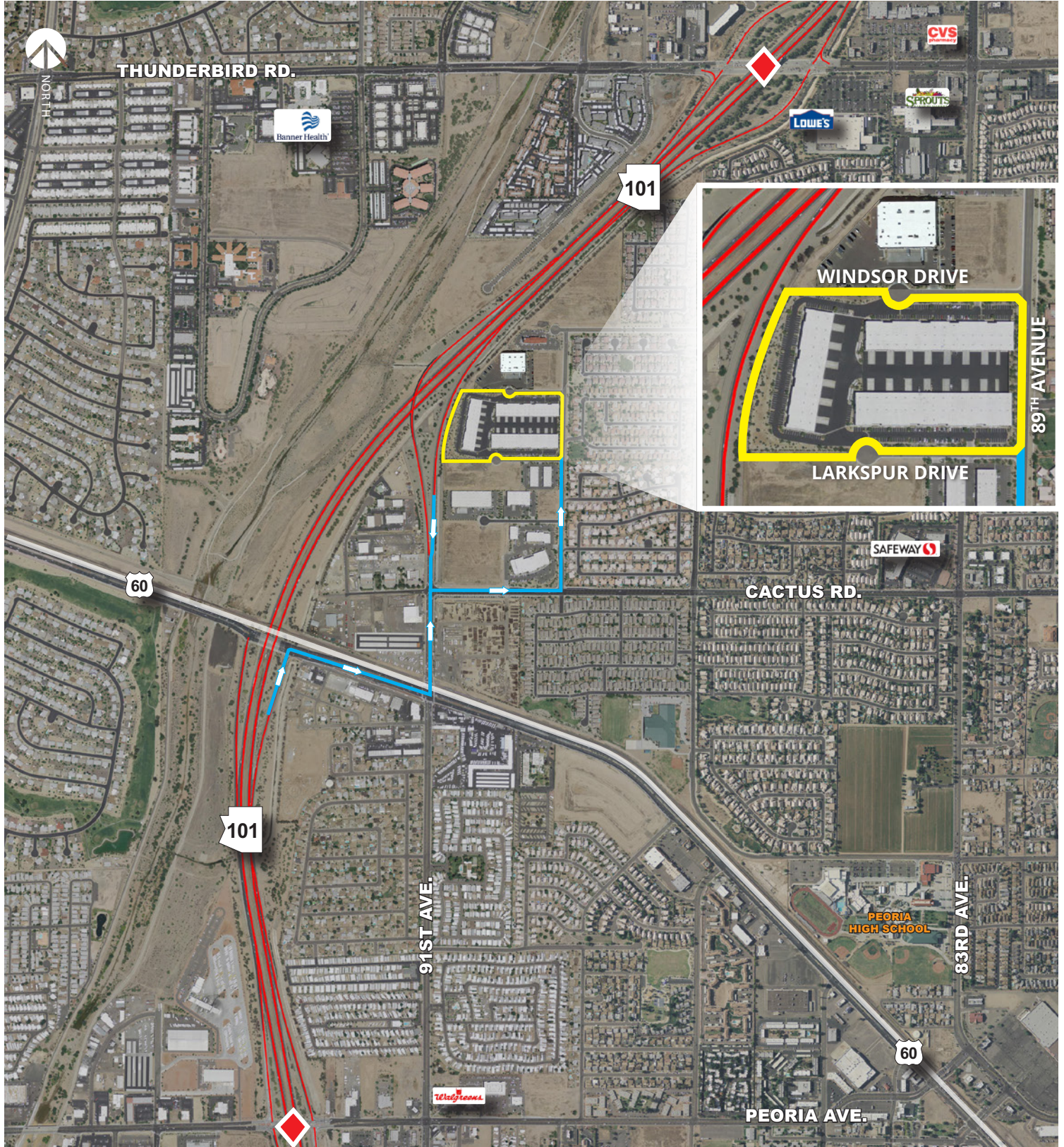
JEFF CONRAD
PRINCIPAL
602.954.3743
jconrad@leearizona.com

CHRIS McCLURG
PRINCIPAL
602.954.3766
cmclurg@leearizona.com

3200 E. Camelback Rd.
Suite 100
Phoenix, Arizona, 85018
ph: 602.956.7777 fx: 602.954.0510
www.leearizona.com

CABOT COMMERCE CENTER FOR LEASE | 101-FREEWAY & CACTUS ROAD PEORIA, ARIZONA

LEE & ASSOCIATES®
COMMERCIAL REAL ESTATE SERVICES



MATT HOBAICA, SIOR
PRINCIPAL
602.954.3755
mhobaica@leearizona.com

JEFF CONRAD
PRINCIPAL
602.954.3743
jconrad@leearizona.com

CHRIS McCLURG
PRINCIPAL
602.954.3766
cmcclurg@leearizona.com

3200 E. Camelback Rd.
Suite 100
Phoenix, Arizona, 85018
ph: 602.956.7777 fx: 602.954.0510
www.leearizona.com