

DOWNTOWN
PHOENIX

SKY HARBOR
INTERNATIONAL
AIRPORT

PIESTEWA
PEAK

CAMELBACK
MOUNTAIN

10

60

±7.70 ACRES FOR SALE

Premier Corner Lot in Tempe

GUADALUPE RD.

KYRENE RD.



SUBJECT
±7.70 ACRES

VAUGHN ST.

555 WEST GUADALUPE ROAD

TEMPE, ARIZONA

ANDREW CHENEY, CCIM, SIOR
PRINCIPAL
602.954.3769
acheney@leearizona.com

R. CRAIG COPPOLA, CCIM, SIOR, CRE
PRINCIPAL
602.954.3762
ccoppola@leearizona.com

GREGG KAFKA
ASSOCIATE
602.954.3777
gkafka@leearizona.com

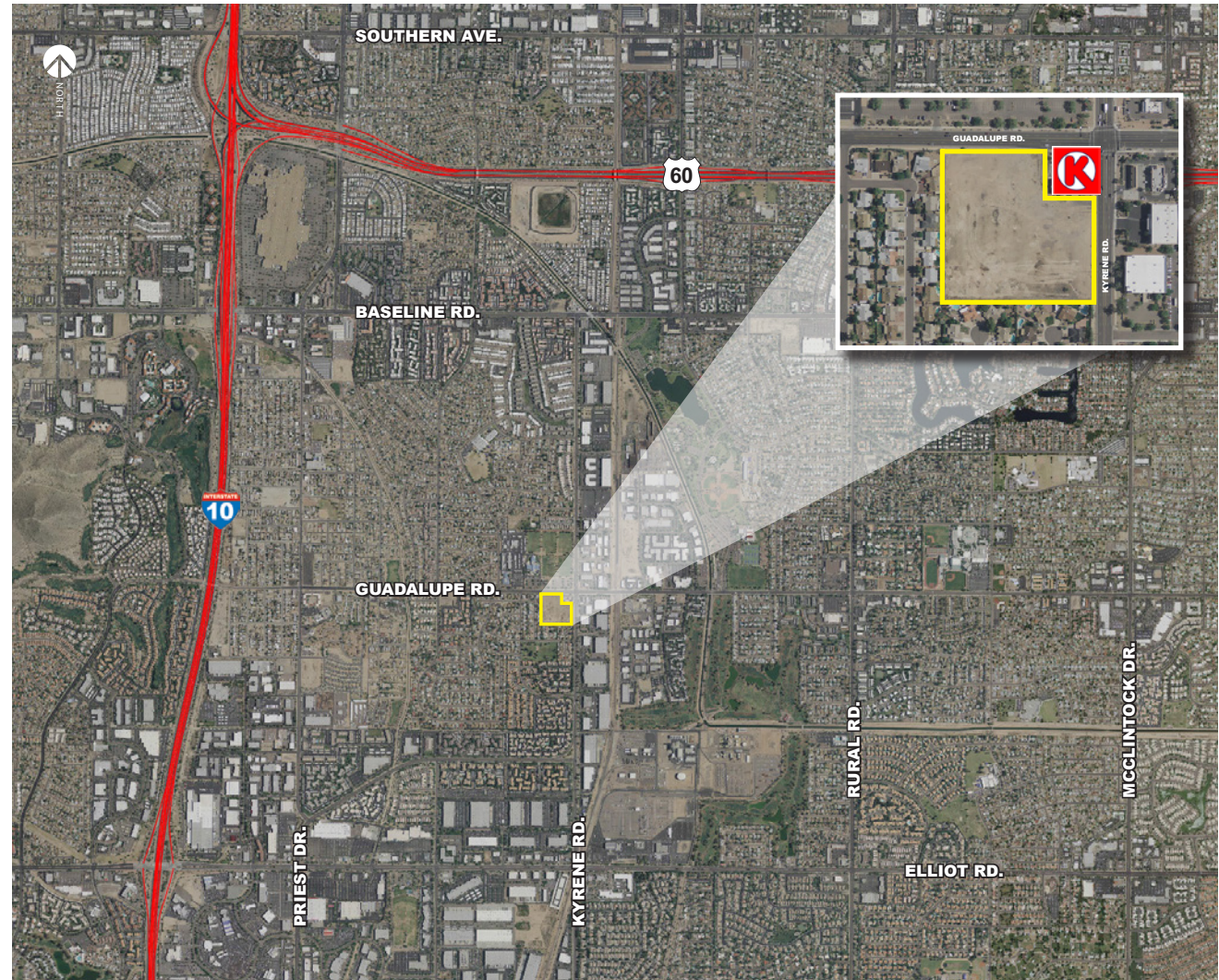
 **LEE & ASSOCIATES®**
COMMERCIAL REAL ESTATE SERVICES

555 WEST GUADALUPE ROAD TEMPE, ARIZONA

FOR SALE

FEATURES:

- Rare Development Opportunity in Sought After Tempe Submarket
- Corner Lot on Signalized Intersection
- Abundant Amenities Nearby
- Zoned PCC-1, Tempe
- Excellent Visibility on High Traffic Roads



ANDREW CHENEY, CCIM, SIOR
PRINCIPAL
602.954.3769
acheney@leearizona.com

R. CRAIG COPPOLA, CCIM, SIOR, CRE
PRINCIPAL
602.954.3762
ccoppola@leearizona.com

GREGG KAFKA
ASSOCIATE
602.954.3777
gkafka@leearizona.com

LEE & ASSOCIATES®
COMMERCIAL REAL ESTATE SERVICES