

NORTH SCOTTSDALE CORPORATE CENTER

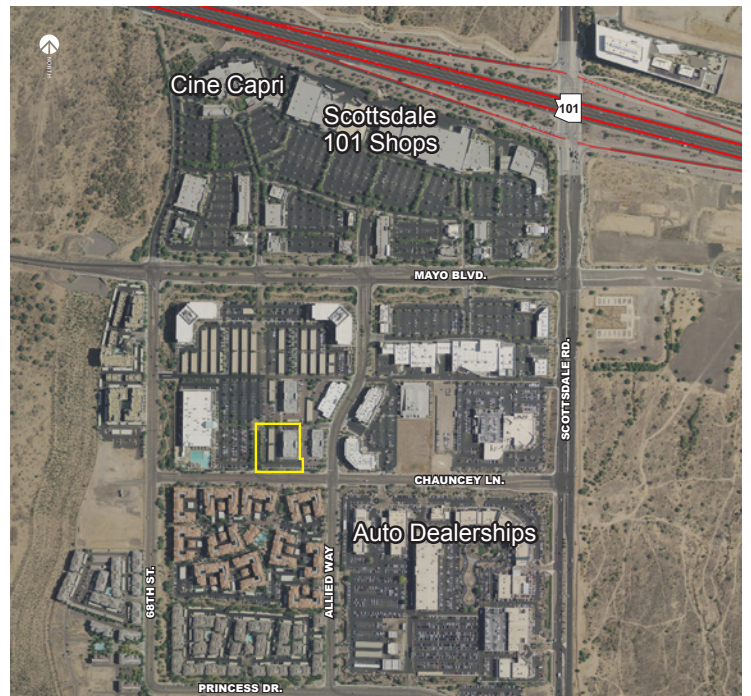
6910 E. CHAUNCEY LANE PHOENIX, ARIZONA

FOR LEASE



FEATURES:

- 2,822 RSF of former architecture space available immediately
- 6,939 SF plug n' play option
- 1,829 SF spec suite available
- Two-story, class "A" office project
- Parking ratio 4.6:1000
- Numerous Amenities within walking distance
- Located in the prestigious North Scottsdale office market
- Minutes to Loop 101 & 51 Freeways
- Walking distance to Lifetime Fitness Center
- Across the street from Scottsdale 101 Shopping Center with numerous restaurants, shopping and entertainment
- Adjacent to Scottsdale Auto Mall



3200 E. Camelback Rd.
Suite #100
Phoenix, Arizona, 85018
ph: 602.956.7777 fx: 602.954.0510
www.leeearizona.com

BILL BLAKE, SIOR
PRINCIPAL
(602) 954.3761
bblake@leeearizona.com

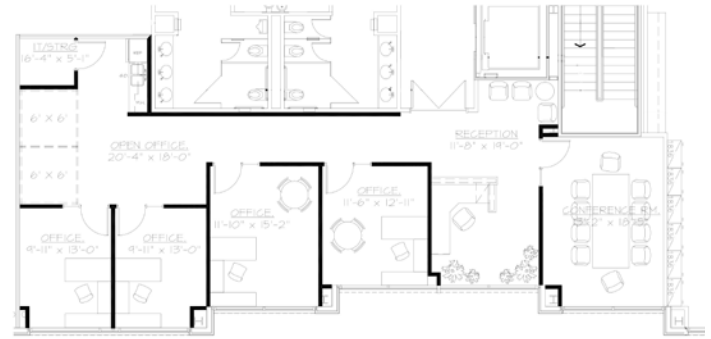
COLTON TRAUTER
PRINCIPAL
(602) 474.9503
ctrauter@leeearizona.com

All information furnished regarding property for sale, rental or financing is from sources deemed reliable, but no warranty or representation is made to the accuracy thereof and same is submitted to errors, omissions, change of price, rental or other conditions prior to sale, lease or financing or withdrawal without notice. No liability of any kind is to be imposed on the broker herein.

NORTH SCOTTSDALE CORPORATE CENTER

6910 E. CHAUNCEY LANE PHOENIX, ARIZONA

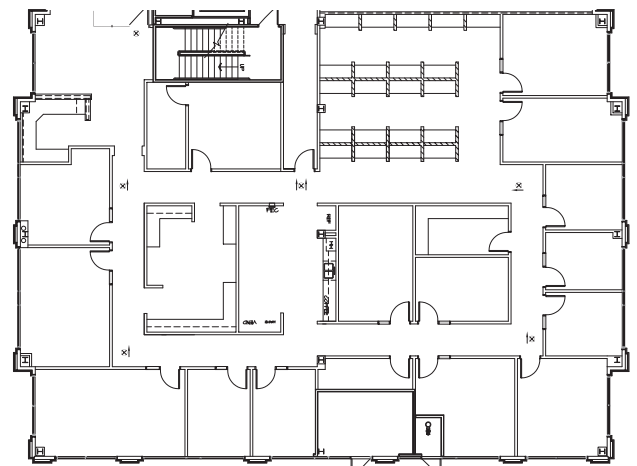
FOR LEASE



1,829 SF Spec Suite*



2,822 RSF



Plug-N-Play Option: 6,939 SF



3200 E. Camelback Rd.
Suite #100
Phoenix, Arizona, 85018
ph: 602.956.7777 fx: 602.954.0510
www.learizona.com

BILL BLAKE, SIOR
PRINCIPAL
(602) 954.3761
bblake@learizona.com

COLTON TRAUTER
PRINCIPAL
(602) 474.9503
ctrauter@learizona.com

All information furnished regarding property for sale, rental or financing is from sources deemed reliable, but no warranty or representation is made to the accuracy thereof and same is submitted to errors, omissions, change of price, rental or other conditions prior to sale, lease or financing or withdrawal without notice. No liability of any kind is to be imposed on the broker herein.