



THE  
OFFICES  
AT  
SCOTTSDALE  
*Seville*

**7001** North Scottsdale Road | Scottsdale, AZ

**STEVE KOHLS**

602.954.3777

skohls@lee-arizona.com

**STEVE WHITEHEAD**

602.912.3535

swhitehead@leeassociates.com



Listed by:

**LEE &  
ASSOCIATES®**

COMMERCIAL REAL ESTATE SERVICES

Owned and Managed by:



"No warranty or representation is made to the accuracy of the foregoing information. Terms of sale or lease and availability are subject to change or withdrawal without notice."





### Property Details:

- Two-story Class “A” office building
- +92,905 SF
- Major building renovations completed
- Abundant parking at the project with executive garage parking directly below the building
- Expansive mountain and golf course views
- Corporate signage opportunities available on building exterior
- Adjacent to numerous retail amenities at Scottsdale Seville retail project
- On site property management

THE  
OFFICES  
AT  
*Seville*  
SCOTTSDALE

### Property Amenities

#### (Restaurants: Food/Drink)

- Ruth’s Chris Steak House
- Wildflower Bread Company
- The Cove Trattoria
- Shinbay Sushi
- Terrior Wine Pub
- Starbucks Coffee Co.
- La Petite France
- Jamba Juice

#### Service:

- Rumors Hair & Nail Salon
- 20 Lounge Nail Bar & Boutique
- Massage Envy Spa
- The Dailey Method Exercise Studio
- Beal Bank
- Encore Cleaners



# 7001 North Scottsdale Road | Scottsdale, AZ

**STEVE KOHLS**

602.954.3777

skohls@leeearizona.com

**STEVE WHITEHEAD**

602.912.3535

swhitehead@leeassociates.com

Listed by:  
**LEE & ASSOCIATES®**  
COMMERCIAL REAL ESTATE SERVICES

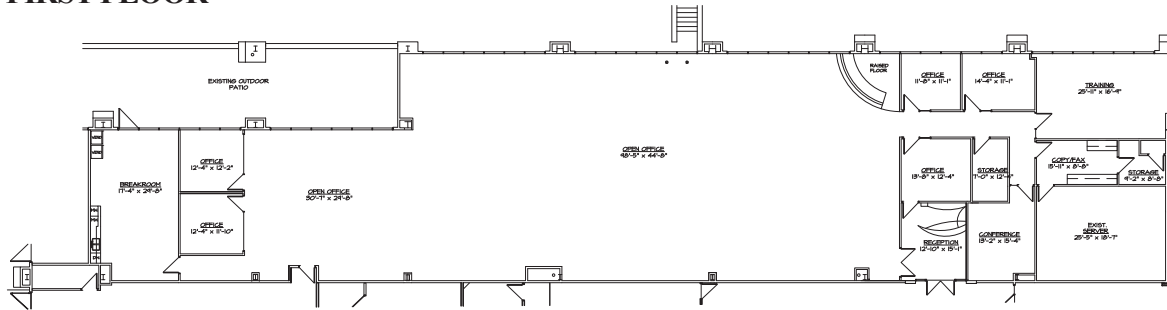
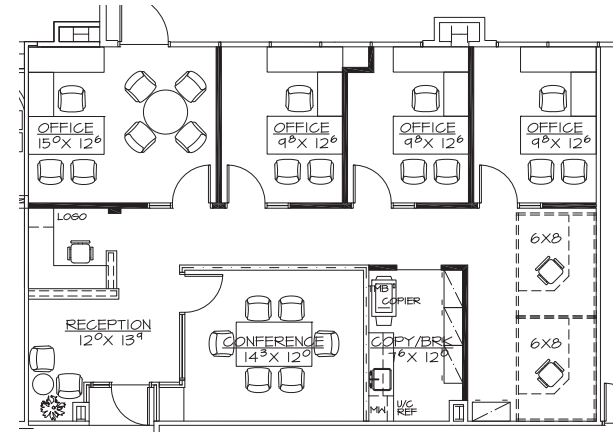
Owned and Managed by:

**THE MATTESON COMPANIES**

www.mattesonrealty.com

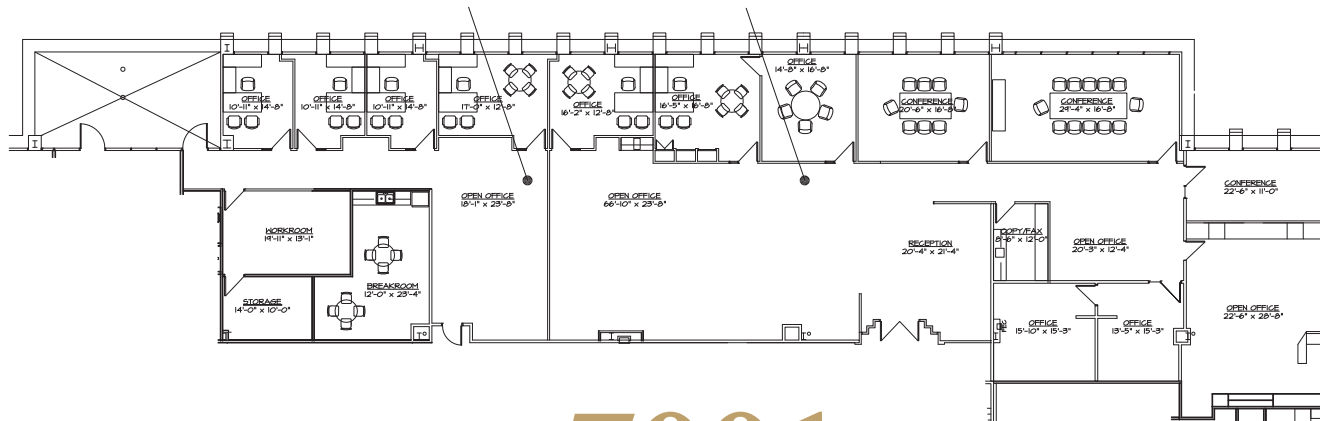
“No warranty or representation is made to the accuracy of the foregoing information. Terms of sale or lease and availability are subject to change or withdrawal without notice.”

## FIRST FLOOR

**Suite 1010 - 9,733 RSF****Suite 1045 - 1,471 RSF**

### Private Patio/Golf Course Views

## SECOND FLOOR

**Suite 2005 - 2,643 RSF****Suite 2000 - 6,276 RSF**

7001 North Scottsdale Road | Scottsdale, AZ

**STEVE KOHLS**  
602.954.3777  
skohls@leearizona.com

**STEVE WHITEHEAD**  
602.912.3535  
swhitehead@leeassociates.com

"No warranty or representation is made to the accuracy of the foregoing information. Terms of sale or lease and availability are subject to change or withdrawal without notice."

*Listed by:*



*Owned and Managed by:*



www.mattesonrealty.com